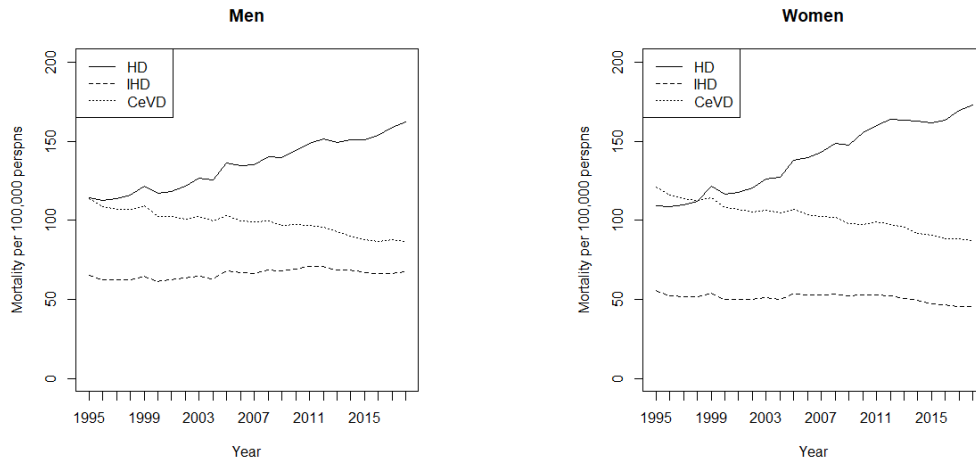


## Supplementary Materials



### Supplementary Material 1. The yearly mortality of men (left) and women (right) due to HD, IHD, and CeVD per 100,000 persons from 1995 to 2018.

HD, heart disease; IHD, ischemic heart disease; CeVD, cerebrovascular disease.

### Supplementary Material 2. The results of the model evaluation.

Model	Deviance Information Criterion					
	HD		IHD		CeVD	
	Men	Women	Men	Women	Men	Women
Age	5011.7	4659.5	4278.4	3832.0	4581.4	4410.9
Age-period	4967.1	4548.9	4223.4	3834.0	4491.2	4384.2
Age-cohort	4865.4	4506.7	4221.6	3780.6	4456.0	4305.2
Age-period-cohort	4855.8	4508.1	4191.7	3754.6	4431.3	4300.0

Abbreviations: HD, heart diseases; IHD, ischemic heart diseases; CeVD, cerebrovascular diseases.